

Steam Roller Parts List

ITEM QTY PARTS

| | | |
|-------|---|------------------------|
| 1 | 1 | Fire Box Black |
| 2 | 1 | Fire Box Cowl |
| 6 | 1 | Boiler Assembly |
| 7 | 1 | Fork |
| 12 | 1 | Eng Face Pipe Assembly |
| 14 | 1 | Crank |
| 16 | 1 | Fly Wheel |
| 22 | 1 | Rear Axle - 143mm |
| 24/25 | 2 | Rear Wheel |
| 26/27 | 2 | Front Rollers |
| 28 | 1 | Front Axle - 107mm |
| 32 | 1 | Burner Tray |
| 33 | 1 | Scuttle |
| | 1 | Canopy Assembly |
| | 1 | Steering Rod |
| | 1 | Solid Fuel |
| | 1 | Oil |
| | 1 | Funnel |

22

SRI KIT Canopy Fitting

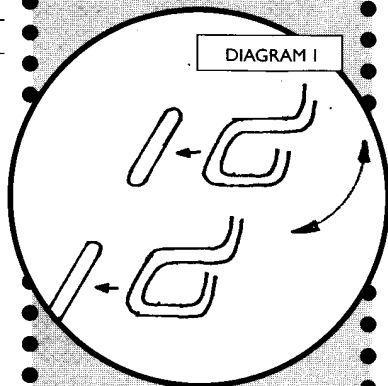


DIAGRAM 1

1. Locate the canopy wire ends into the two slots at the back of the fire box (Dia. 1)
2. Swing the canopy up towards the chimney
3. Attach the canopy by screwing the screw into the chimney

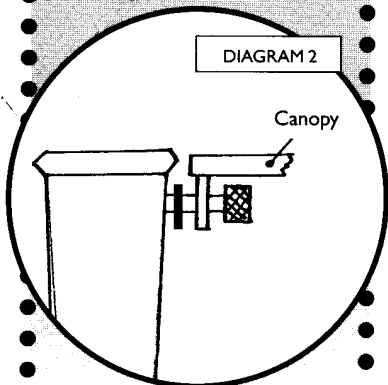


DIAGRAM 2

Mamod Limited
Unit 1A,
Summit Crescent Ind. Estate,
Smethwick, Warley,
West Midlands B66 1BT
Tel: 0121 500 6433
Fax: 0121 500 6309
Email: enquiries@mamod.co.uk
www.mamod.co.uk

Steam Roller Parts contained in Bag

ITEM QTY PARTS

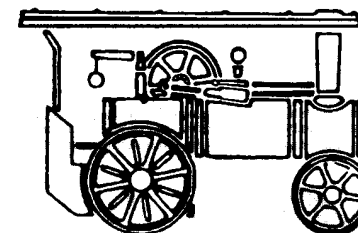
| | | |
|----|---|-------------------------------|
| 10 | 6 | BA Brass Screws |
| 3 | 4 | BA Brass Nuts |
| | 1 | BA Brass Screw |
| 4 | 1 | Sight Glass Cover [V02] |
| 5 | 1 | Sight Glass [V03] |
| 6 | 1 | Gasket [N01] |
| 8 | 2 | Brass Washer |
| 9 | 1 | Coil Spring Lrg [M02] |
| 10 | 1 | Knurled Nut |
| 13 | 1 | Brass Pipe Retainer [Knurled] |
| 17 | 1 | Whistle Assy [x37] |
| 18 | 3 | Fibre Washer [N03] |
| 19 | 1 | Whistle Lever [x34] |
| | 1 | Coil Spring [E02] |
| | 1 | Trunion Bolt [E01] |
| 20 | 1 | Piston [x401] |
| | 1 | Cylinder [x301] |
| 21 | 1 | Reverse Lever [x68] |
| 23 | 2 | Large End Caps [N52] |
| 29 | 2 | Small End Caps [N53] |
| 30 | 1 | Drive Band [E37] |
| 31 | 1 | Safety Valve [x05] |
| | 1 | Small Washer |
| | 2 | Split Rings |

42

Operating Instructions for a MAMOD Steam Roller Kit SRK1

Mamod

STEAM MODELS



Mamod Limited

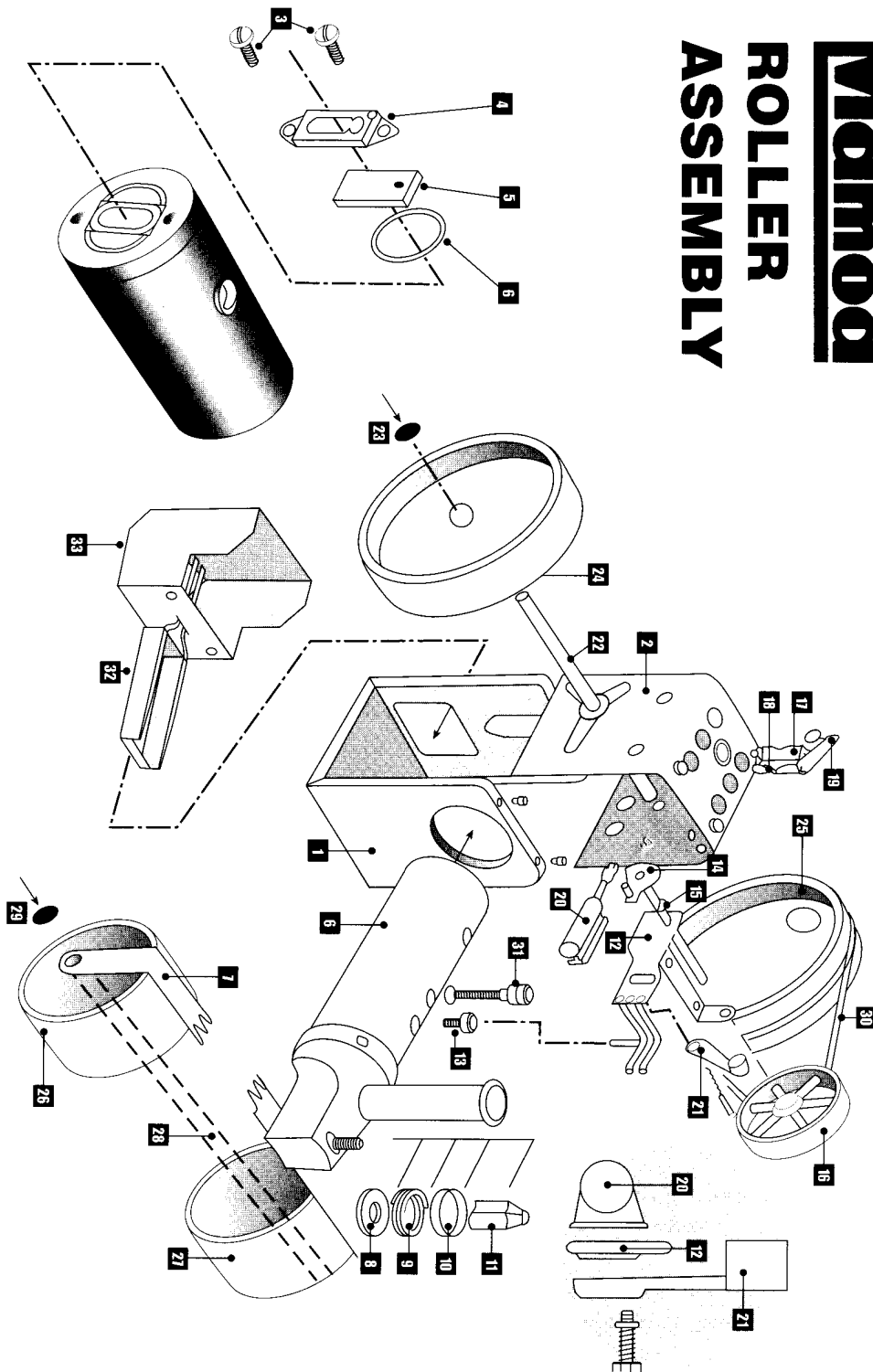
Unit 1A,
Summit Crescent Ind. Estate,
Smethwick, Warley,
West Midlands B66 1BT

Tel: 0121 500 6433
Fax: 0121 500 6309

Email: enquiries@mamod.co.uk
www.mamod.co.uk

L69
Issue 1

Mamod ROLLER ASSEMBLY



For a MAMOD Steam Roller Kit SRK1

Recommended for use under adult supervision.

1. Remove safety valve and insert filler funnel. Depress cylinder away from engine frame and fill boiler up to indicator on sight glass with clean water (a longer run will be obtained if hot water is used). Replace safety valve and, using fingers only, screw up tight. Should the water level fall below the bottom of sight glass, the burner must be immediately removed and the boiler refilled before further use.
2. Use only Mamod solid fuel with this engine. Place two tablets only, flat in the tray. Light the tablets from the front end and carefully slide the tray into the firebox, engaging the scuttle with the holding tags.
3. Thoroughly oil all working parts (bearings, piston etc.) with MEDIUM GRADE MOTOR OIL (SAE 10/30 or similar). The engine should also be oiled occasionally during each run.
4. When steam is up, the engine will start with a few turns of the flywheel. The engine will run in the direction the lever is pointing and engine speed can also be adjusted with this lever. Some water may be lost from the cylinder when starting.
5. By rotating the front axle, the steering can be tightened for free running or slackened for manoeuvring with the steering rod. When attaching the steering rod, screw down on handle first and then tighten lock nut.

DO NOT hold down the safety valve or tamper with it in any way.

DO NOT remove the safety valve while there may still be pressure in the boiler. (Release steam by operating the whistle)

DO NOT fill the burner tray without first refilling the boiler.

DO NOT overfill the burner tray.

GENERAL HINTS

1. Before the first run, flush out the boiler with boiling water.
2. The engine should only be operated on a smooth and level surface (not carpet) and in a well ventilated place.
3. The engine may also be used to power other models. Always gear models to allow the engine to run fast.
4. After using the engine, drain all water from the boiler and exhaust chamber and oil all working parts.

CAUTION

Please note:

Steam engines get very hot and can inflict burns if adequate care is not taken.

ASSEMBLY INSTRUCTIONS

In order to build your Steam Roller Kit easily and successfully, you should read and follow these assembly instructions, and when complete read the operating instructions.

It is advisable to leave the components in their places in the box so that the items can be identified.

Take the Firebox (Item 1) and the Firebox Cowl (Item 2) and assemble the Cowl inside the Firebox, making sure that the fixed Brass Nuts in the Cowl point towards the front of the Firebox with the large round hole.

Fix 2 x 6BA Brass Screws and Nuts to the top of the Firebox at the end. It is best to bend the Firebox outwards enough to gain access. Then close the Firebox and fix 2 more Screws and Nuts at the front.

Take (Item 3) 2 x 6BA Brass Screw, (Item 4) Sight Glass Brass Cover, (Item 5) Sight Glass, (Item 6) Rubber Gasket and assemble to the rear of the Boiler as shown on the assembly diagram.

Slide the Boiler (Item 6) through the front of the Firebox and locate the Sight Glass Cover in the slot. Fasten with 2 x 6BA Brass Screws. The Boiler is a tight fit and care must be taken to avoid scratching it, turn through 90 degrees if necessary.

Take the Front Fork assembly (Item 7) and insert the Pivot Rod up through the Smokebox then take the Brass Washer (Item 8) and place on top of the Pivot Rod. Repeat with the large coiled Spring (Item 9), the Brass Knurled Nut (Item 10). Take the Frame and Pipe assembly (Item 12) and slide the Knurled Brass Pipe Retainer (Item 13) over the single short Steam Pipe, knurled end first. Locate the two Exhaust Pipes, from a 45 degree angle, into the holes in the back of the Chimney, then press the Steam Pipe into the Boiler, making sure that it locates in the rubber 'O' Ring in the tapped hole. Fasten the Frame to the Firebox with 2 Brass screws (Bag 1). Screw tight the knurled pipe retainer. It may assist assembly if a spot of oil is smeared around the end of the Steam Pipe insertion.

Take the Crankshaft assembly (Item 14-Bag 2) and place one brass Washer (Item 15) over the

Shaft (Bag 1), slide the Shaft through the right hand side of the Frame (viewed from the rear). Slide on the Flywheel (Item 16) with the groove outwards and secure with the 4BA Screw.

Take the Brass Whistle (Item 17-Bag 2) and slide one Rubber washer (Item 18-Bag 1) onto the threaded end, then fit on the Lever assembly (Item 19-Bag 2), and retain in position with the other Rubber Washer. Screw the Whistle down into the top of the Boiler. Tighten but do not over tighten. Assemble the two split rings together and fit to the whistle arm.

Take the Brass Trunnion Bolt, and Cylinder (Item 20-Bag 2), the Small Coil Spring and the Small Brass Washer, push the Trunnion Bolt through the Control Lever (Item 21) so that the Washer is against the outside of the cupped form. Locate the cup of the Control Lever over the rim of the large hole in the Frame and Pipe assembly (Item 12) from the left hand side and, after locating the hole in the end of the Piston over the Crankpin (Item 14), screw the Trunnion Bolt into the Cylinder until it is tight.

Take the Roller Rear Axle (Item 22 - 143mm long) and press on one large black Axle Cap (Item 23), slide on one large Rear Wheel (Item 24). Slide the Axle into the Firebox and fit the other Rear Wheel (Item 25) and fit on the other large Axle Cap.

Fit two Front Rollers (Item 26/27) to the front Axle (Item 28) and retain with two of the small Axle Caps (Item 29).

Position Front Roller Wheel together inside the Fork assembly and slide through the Front Axle, retain with black Axle Cap.

Fit the Drive Band (Item 30) over the groove in the Flywheel, and over the groove in the left hand Rear Wheel.

Screw the Safety Valve (Item 31) into the Boiler, finger tight. Ensure that the Fibre Washer is in place.

Take the Burner Tray (Item 32) and slide the Handle through the Scuttle (Item 33), clip the Scuttle onto the tags at the rear of the Firebox.

When fired for the first time it is advisable to disconnect the Drive Band and allow to run unloaded, remembering to oil thoroughly, all moving parts.

